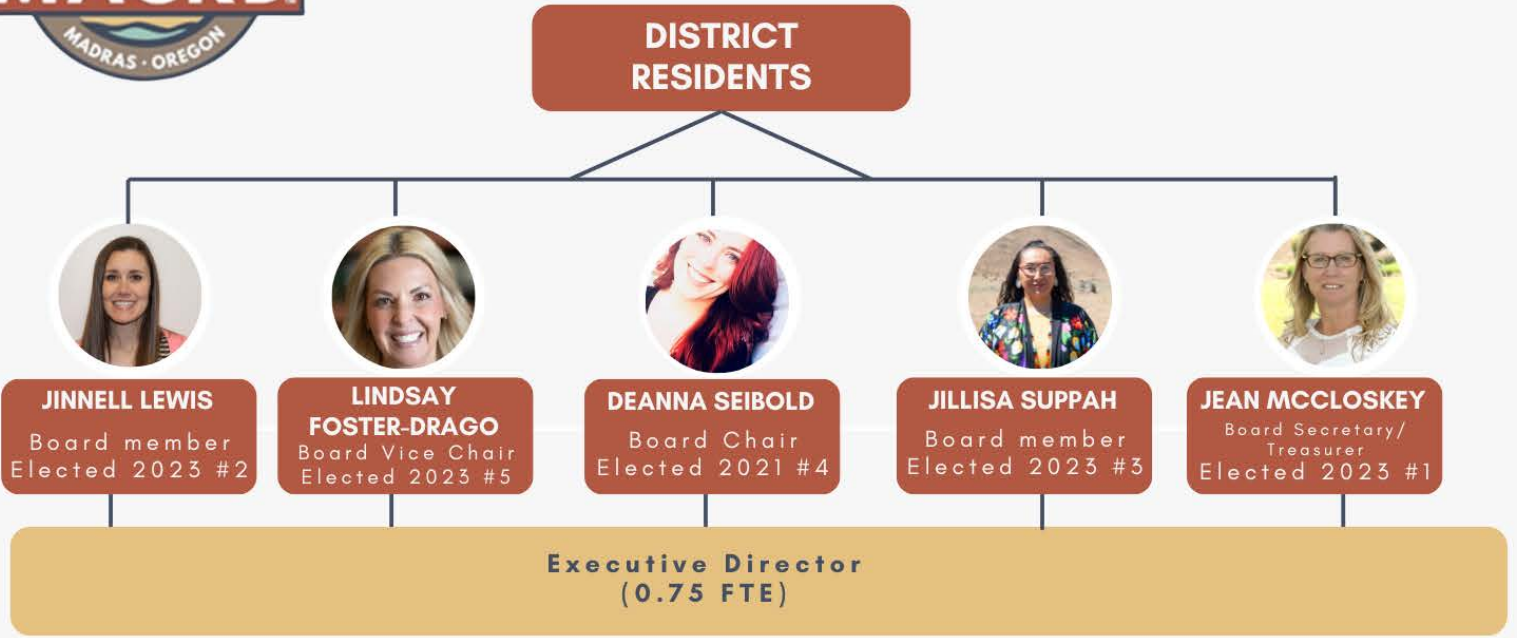




# ORGANIZATION CHART



Recreation Programs Manager  
(1.0 FTE)

Sport Programs Coordinator  
(0.75 FTE)

Maintenance Coordinator  
(0.50 FTE)

Head Lifeguard I/II  
(1.50 FTE)

Lifeguard I/II  
(0.50 FTE)

Program staff  
(0.50 FTE)

Program staff  
(0.25 FTE)

Program staff  
(0.25 FTE)

Custodial staff  
(0.50 FTE)

Patron Services Specialists  
(1.0 FTE)

**Programming**

- Recreation programs and all staffing
  - Sports programs
  - Aquatics Programs
  - ARC Certification
    - Lifeguarding
    - First Aid/CPR
  - Special events
  - Enrichment activities
- District marketing
- Safety & risk oversight
- CPO Team

**4.50 TOTAL FTE  
(10-15 PEOPLE, SEASONAL)**

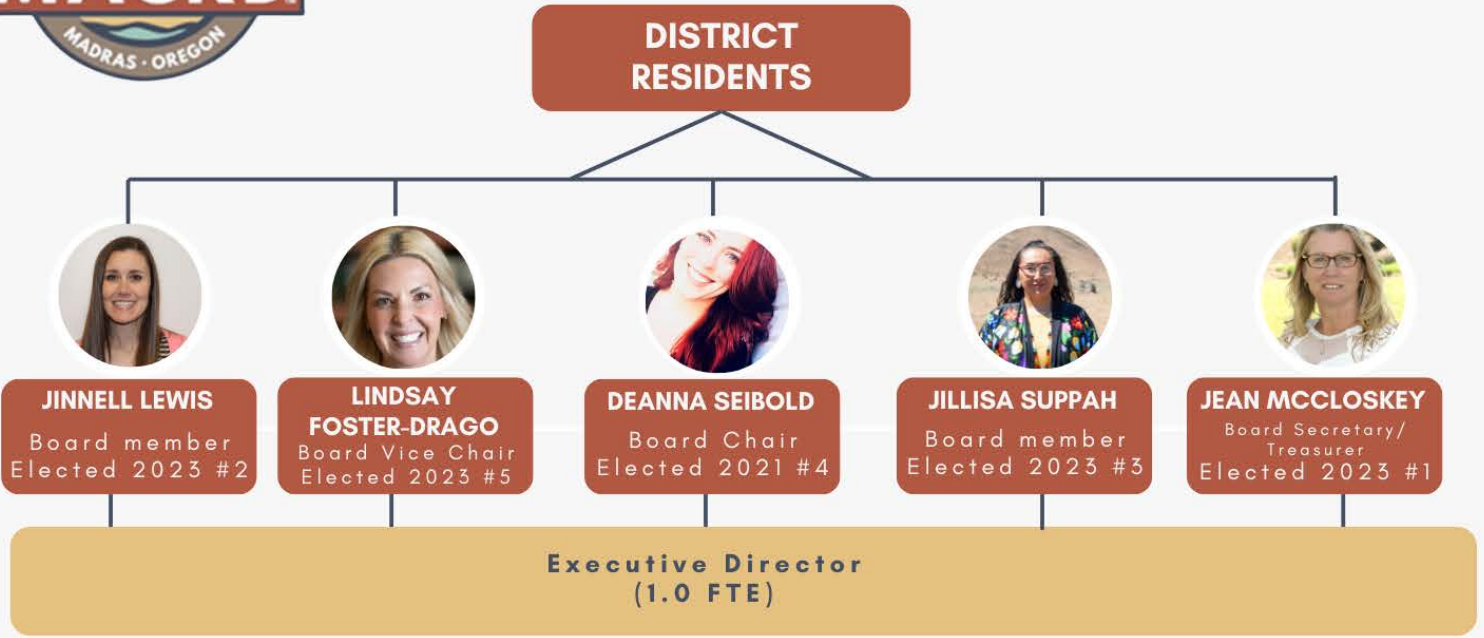
**Internal Services**

- Patron services
- Human Resources
- Financial management
- Capital planning
- Board of directors support
- District public records
- Maintenance and custodial

**2.50 TOTAL FTE  
(5 PEOPLE)**



# ORGANIZATION CHART



**Deputy Director-Recreation**  
(1.0 FTE)

**Aquatics Operations Supervisor**  
(1.0 FTE)

**Aquatic Programs Coordinator**  
(1.0 FTE)

**Aquatics Programs Coordinator**  
(1.0 FTE)

**Recreation Programs Coordinator**  
(1.0 FTE)

**Youth Programs Coordinators**  
(0.25)

**Maintenance Coordinator**  
(0.50 FTE)

**Head Lifeguard I and II**  
(1.70 FTE)

**Site Leads**  
(0.50 FTE)

**Lifeguard I and II**  
(2.0 FTE)

**Program & Events staff**  
(2.25 FTE)

**Custodial staff**  
(0.50 FTE)

**Patron Services Specialists**  
(1.30 FTE)

**Programming**

- Recreation programs and all staffing
  - Sports programs
  - Aquatics Programs
  - ARC Certification
    - Lifeguarding
    - First Aid/CPR
  - Special events
  - Enrichment activities
- District marketing
- Safety & risk oversight
- CPO Team

**11.70 TOTAL FTE**  
**(20-30 PEOPLE, SEASONAL)**

**Internal Services**

- Patron services
- Human Resources
- Financial management
- Capital planning
- Board of directors support
- District public records
- Maintenance and custodial

**3.30 TOTAL FTE**  
**(7 PEOPLE)**